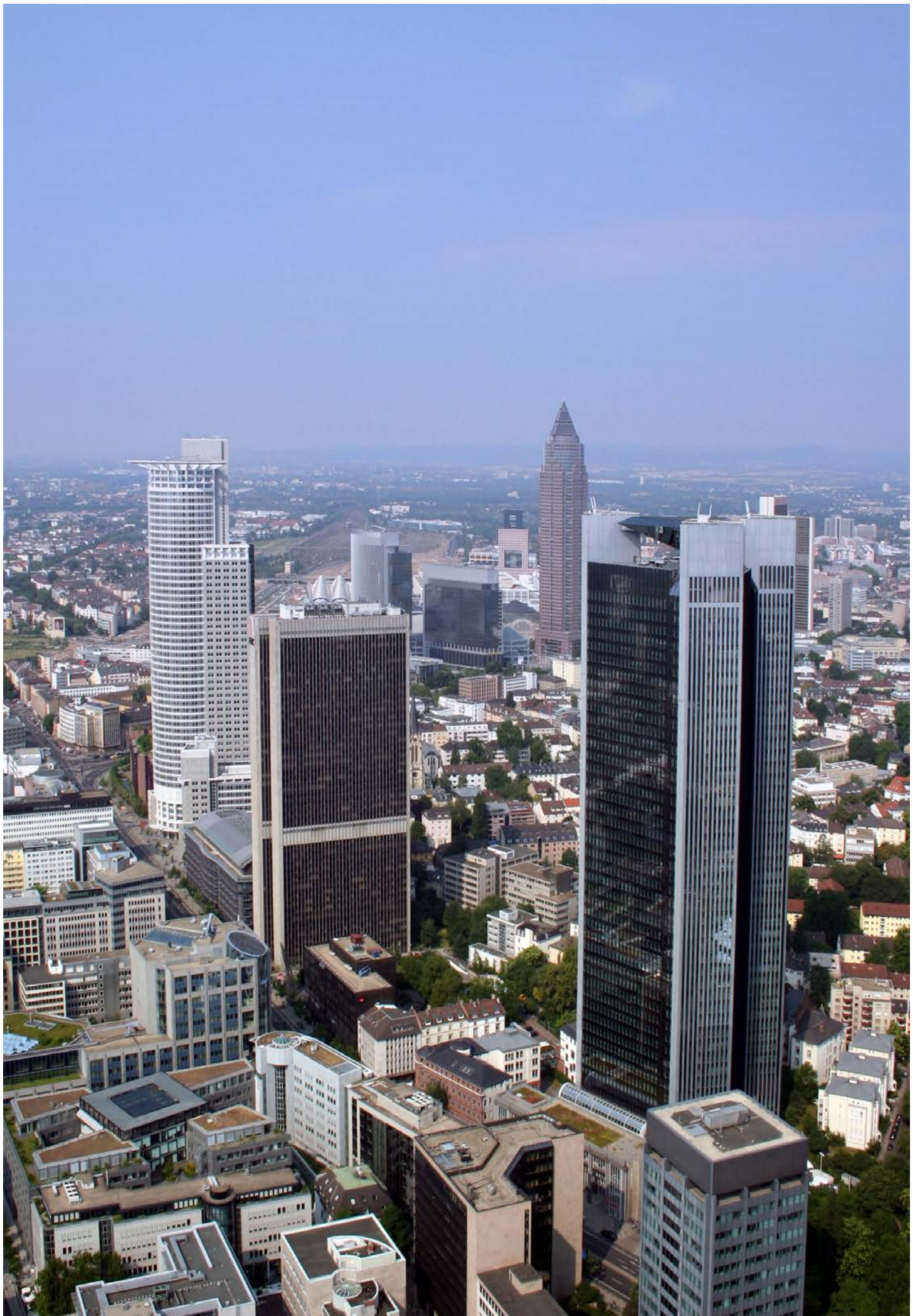


THE ANSWER TO HIGH-DENSITY LIVING IN MIXED-USE BUILDINGS



Quality of life thanks
to REGUPOL impact sound
insulation and vibration
isolation



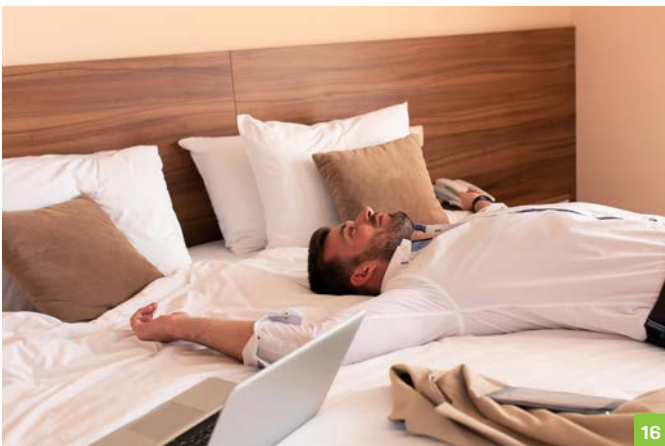
HOW DO YOU IMPROVE THE QUALITY OF **URBAN DEVELOPMENTS?** TOGETHER.

Urbanization is increasing. According to United Nations forecasts, seven out of ten people will live in cities by 2050. Since there is a huge shortage of space, intelligent building design is needed. The quality of populous environments can be significantly improved with the right acoustics. Ask the experts.

Mixed-use concepts bring high-density tower blocks and space-saving neighbourhood developments to life. Close proximity of living, working, leisure activities, and utilities enable today's urban lifestyles. The creation of buildings that meet these needs is becoming more important for investors.

With the right sound insulation, meeting these different needs in a single building can be easily achieved. As an experienced partner, we will show you the right techniques and products to maximise living and working comfort across your international projects, advise you on individual properties, and help you meet standards and regulations.

KEY TOPICS AT A GLANCE



06

The REGUPOL product range

Your key to effective noise control

10

Applications

Our products are suitable for a wide range of applications

24

Quality, Service, Sustainability

Our quality, services and efforts to achieve sustainability

28

REGUPOL Group

Get a better insight into our company and international sales team

HOW DO YOU INSTALL EFFECTIVE SOUND INSULATION? TOGETHER.

POOL
REGUPOL or REGUFOAM vibration for the efficient structure-borne sound decoupling


ROOF TERRACES
REGUPOL sound and drain for impact sound insulation



SUPERMARKETS
REGUPOL or REGUFOAM sound for impact sound insulation

Contact us

Detailed technical information about **REGUPOL** can be found at www.regupol.com/uk/acoustics
Or speak to us in person: +49 2751 803-0
acoustics@regupol.eu



RESIDENTIAL
REGUPOL comfort and **REGUPOL sonus**
for impact sound insulation
REGUPOL sonusclips and **REGUFOAM hangers**
for false walls and suspended ceilings

FITNESS STUDIOS
REGUPOL sonusfit for structure-borne
sound and vibration protection

HOTELS
REGUPOL comfort and **REGUPOL sonus** for
impact sound insulation
REGUPOL sonusclips and **REGUFOAM hangers**
for false walls and suspended ceilings

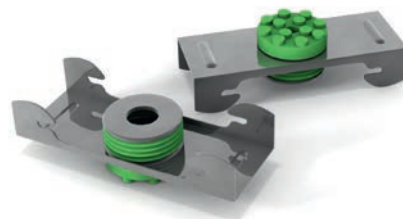
The **REGUPOL** product range



REGUPOL comfort:
Elastomer-based impact sound insulation for various types of floor design and screeds



REGUPOL sonus:
Cork/PU or rubber-based impact sound insulation for screeds and floor coverings



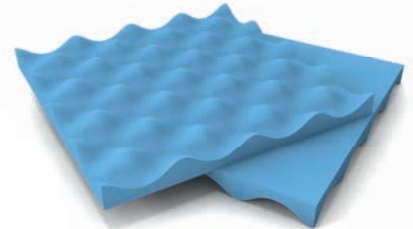
REGUPOL sonusclips:
Resilient sound isolation clips for mounting drywall



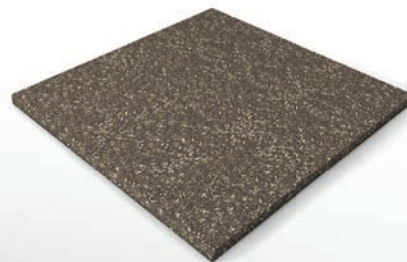
REGUFOAM hangers:
Highly efficient mountings for suspended ceilings



REGUPOL sound and drain:
Elastomer-based impact sound insulation for various types of terrace, bay window and balcony designs



REGUPOL or REGUFOAM sound:
Elastomer-based impact sound insulation for various types of floor design and screeds that need to meet the highest acoustic requirements



REGUPOL sonusfit:
Highly efficient fitness studio soundproofing solutions incorporating sports-specific functional characteristics



REGUPOL or REGUFOAM vibration:
Effective solutions for vibration isolation and structure-borne sound decoupling

Acousticians rely on REGUPOL's expertise to help them meet acoustical requirements, thus ensuring the highest quality mixed-use buildings.

Quality mixed-use buildings require uncompromised versatility. With **REGUPOL**, there are virtually no limits to the ways mixed space can be used in buildings. No matter how small the space, apartments, hotels, offices, practices, shops and supermarkets, restaurants, fitness studios, pools or roof terraces, you don't need to compromise.

REGUPOL offers durable, innovative materials, system solutions, and on-site expert advice on international projects, realizing the use of space within buildings. Satisfied customers all over the world attest to **REGUPOL's** quality and experience. You can rely on them for your project too.

Your benefits:

- reliable planning support and product performance
- a broad range of products and system solutions enable versatile design solutions
- decades of experience

HOW DO YOU BUILD A
**HOME IN THE MIDDLE
OF A CITY?**
TOGETHER.

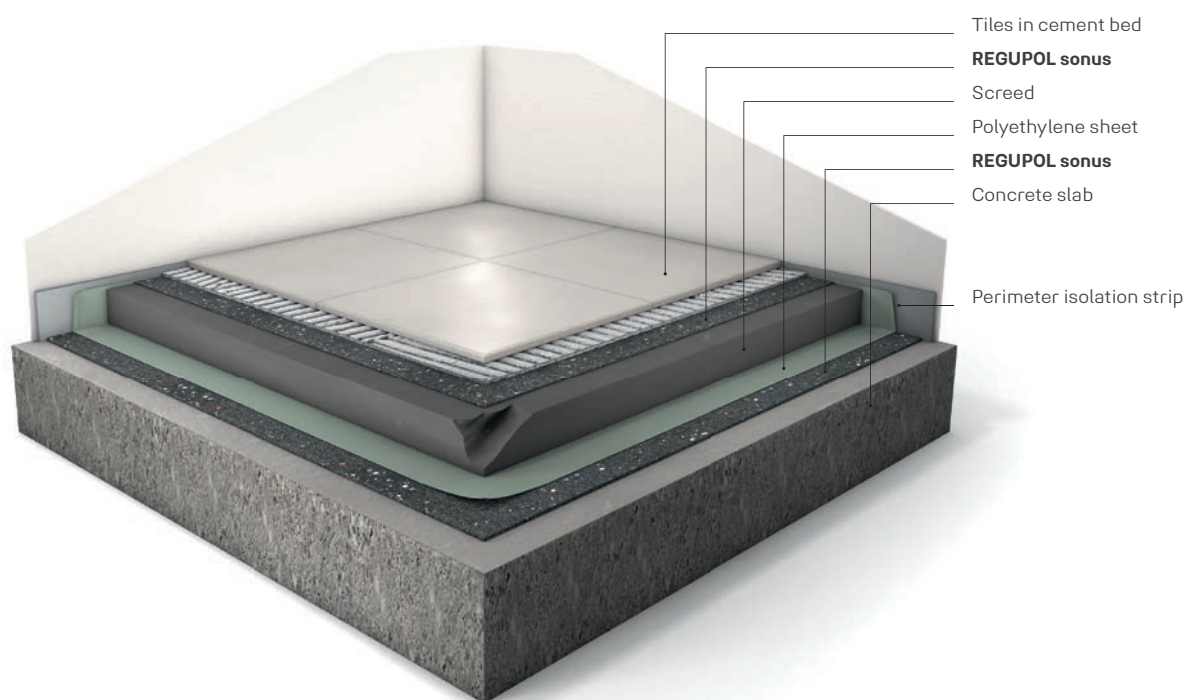


Increasingly, people are living in cities permanently. Growing urbanization inevitably leads to new challenges for noise mitigation that require intelligent solutions.

Quality of life in residential and mixed-use buildings can be improved through good acoustics. Depending on your specific situation, construction methods, and project stage, we can help recommend the right concept and **REGUPOL** products for your needs. The more flexible and versatile these solutions are, the more sustainable the result. With our experts at your side, designing a wide variety of solutions and testing them for cost-effectiveness is easily achieved.

The **REGUPOL sonus** range includes both smooth and profiled versions that make designing specific underfloor solutions, including bonding technology, as well as a wide range of under-screed impact sound insulations, easy. **REGUPOL** products are tested to ISO and ASTM standards and can also be tailored to the needs of your specific projects.

The **REGUPOL comfort** range is especially attractive to customers in Europe. Thanks to CE certification, it can be installed with confidence throughout the European Economic Area. Every product is tested according to ISO standards and features minimal thickness combined with high impact sound reduction.



REGUPOL comfort



REGUPOL sonus



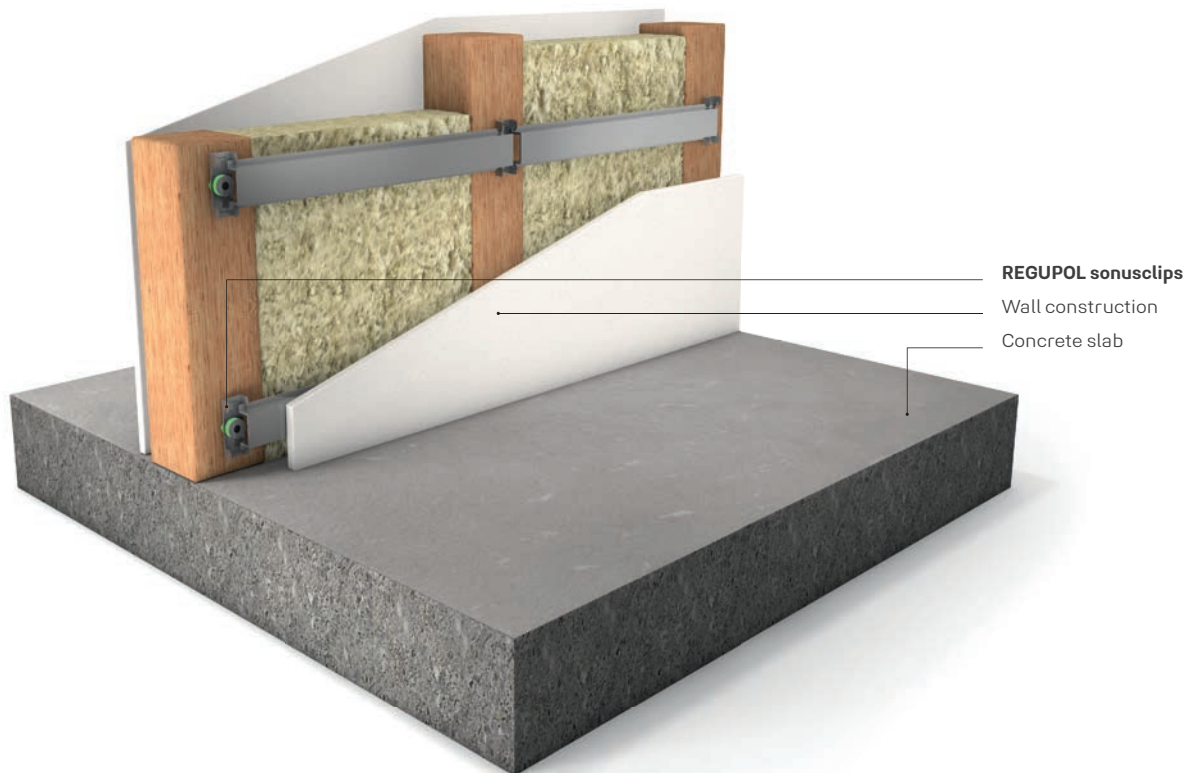
Our tip:

Ask us about the system components – such as adhesives and primers – suitable for each individual **REGUPOL** product. Our experts are glad to support you.

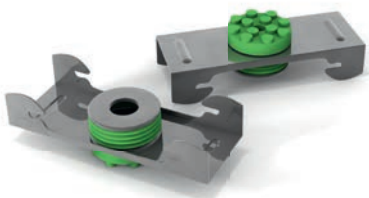


When it comes to effectively reducing airborne noise between rooms, decoupled elastic false walls provide an excellent globally proven solution. With **REGUPOL** legal and contractual acoustic requirements can be met relatively easily.

REGUPOL sonusclips stop structure-borne noise bridging the dry wall and the false wall. With these easy-to-install rubber and metal fasteners can be achieved excellent acoustic building values even where little wall mass is available – something that offers acoustic technicians and architects alike a clear advantage when it comes to structural flexibility.



REGUPOL sonusclips



HOW DO WE CREATE A
CITY OF SHORT DISTANCES?
TOGETHER.

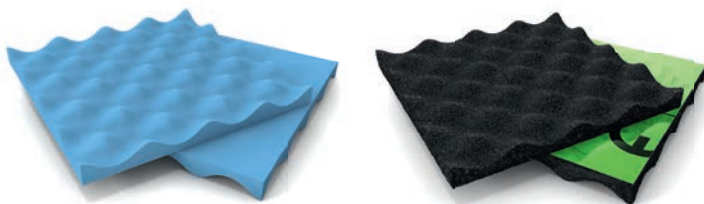
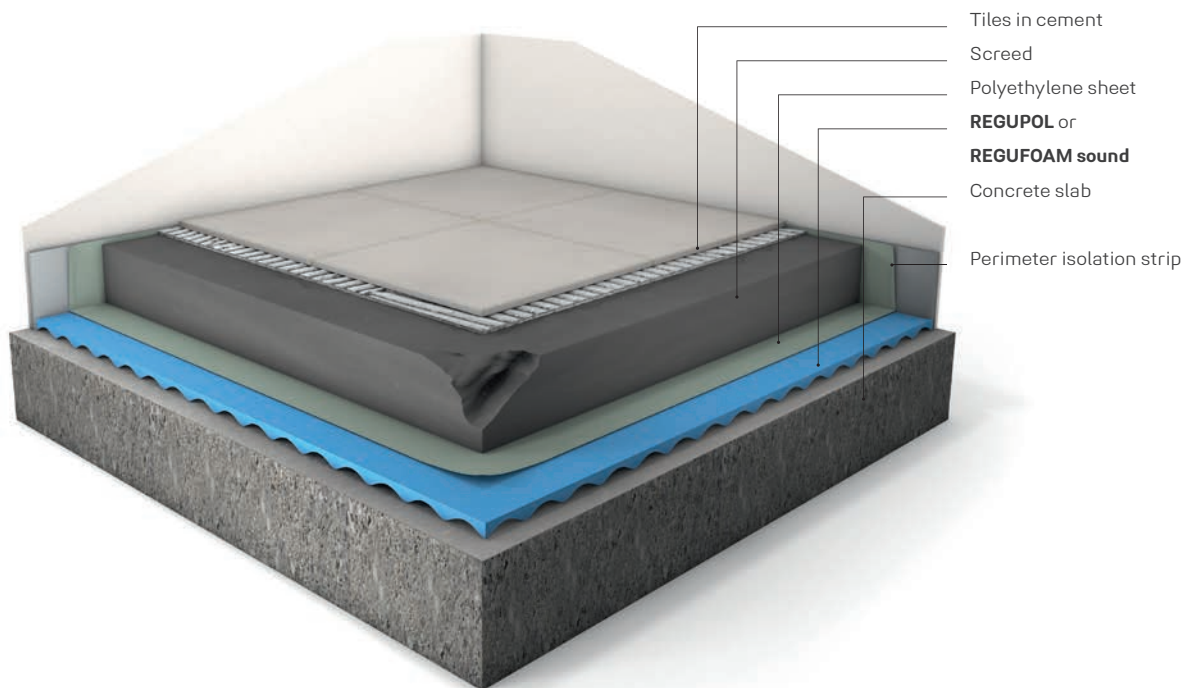


In highly populated neighborhoods and multi-use buildings, convenient access to goods and services is a major issue. This comes as the result of demographic change and the reduced mobility it entails.

Easy access to stores improves the quality of residents' lives considerably. However, it also requires improving the acoustic performance of buildings so that residential and commercial buildings can coexist peacefully. Especially where the delivery and loading of goods outside opening hours is concerned.

To effectively reduce low-frequency structure-borne noise as well as noises being emitted by trolleys and trucks, the experts at **REGUPOL** have developed **REGUPOL** and **REGUFOAM sound**. These highly resilient screed insulation underlays can be used under heavy screeds and slabs.

Our portfolio of solutions ensures reliable building design in this sensitive application. What is more, **REGUPOL** or **REGUFOAM sound** are the right choices for a host of other applications including cinemas, theatres, libraries, workshops and vehicle accessible areas in factory buildings where particularly noisy activities need to be isolated from quiet spaces in residential and commercial buildings. Ask the acoustics experts.

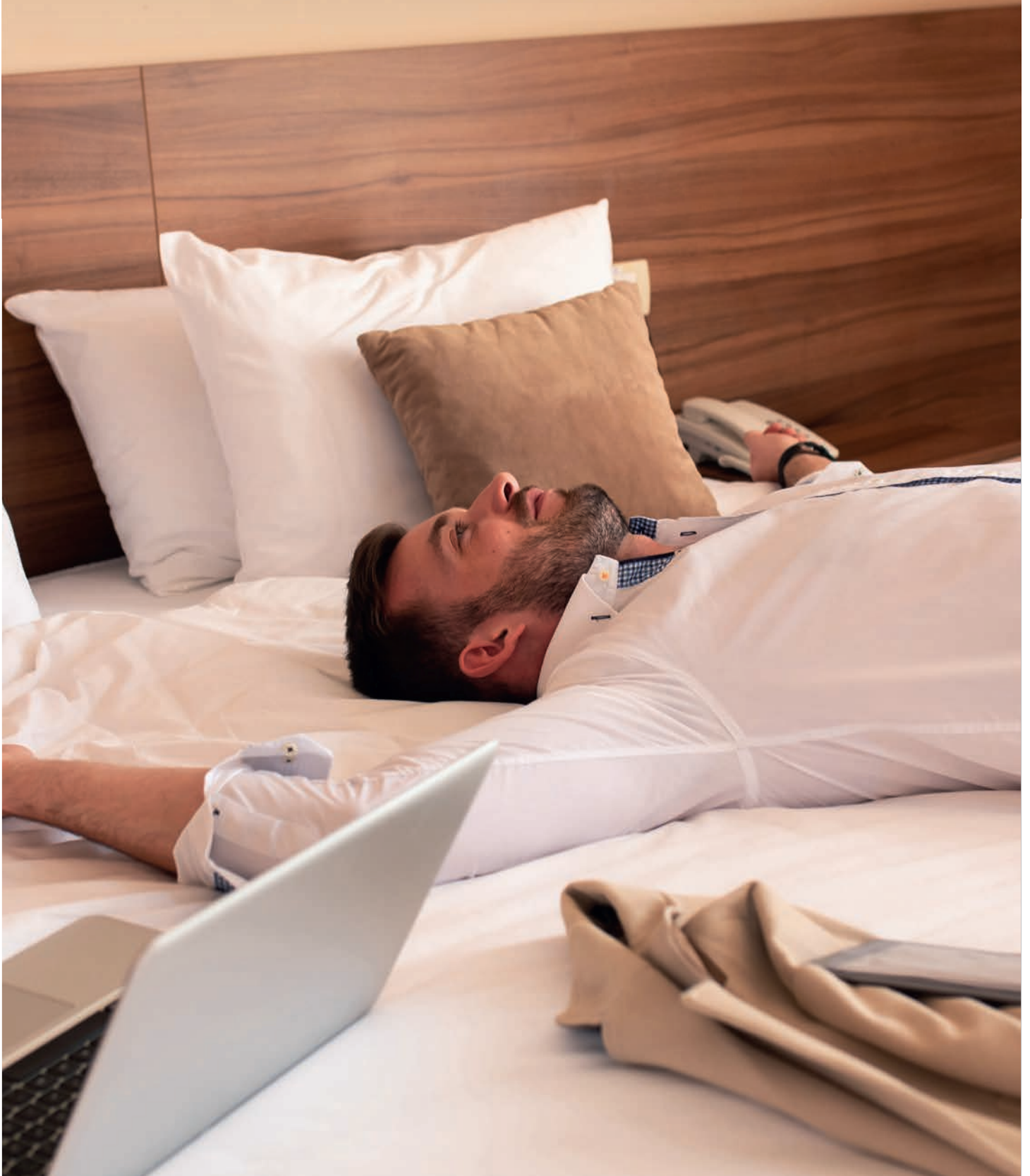


REGUPOL and **REGUFOAM sound** product ranges are tested according to ISO standards and offer maximum sound reduction at low thicknesses.

Our tip:

All **REGUPOL** and **REGUFOAM sound** impact insulation membranes are tested in Germany and certified throughout the EU – their quality is recognised worldwide.

HOW DO YOU ENSURE
RELAXED URBAN LIFESTYLES?
TOGETHER.



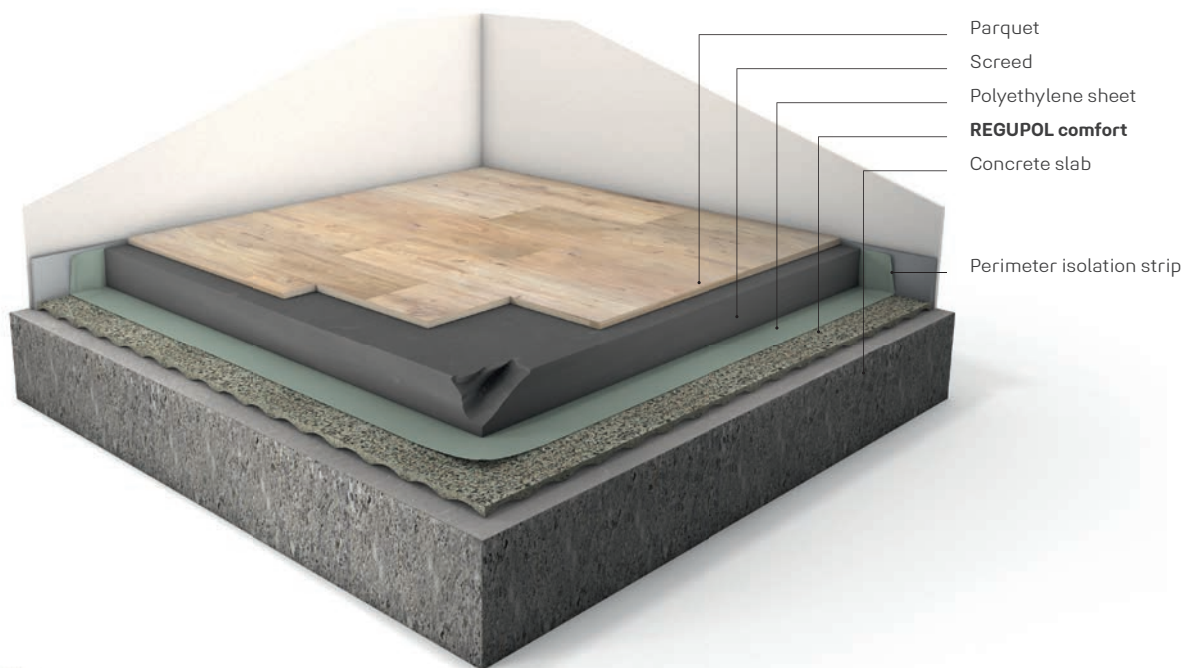
For city hotels, the key driver is a central location and close proximity to transportation. Simultaneously, hotels need to guarantee their guests peace and quiet, especially in an attractive mixed-use environment, where the hotel itself is a source of noise.

Strictly speaking, every hotel is a mixed-use concept in its own right. In addition to the rooms, which need to offer guests maximum peace and quiet, hotels combine elevators, stairwells and technical infrastructure, receptions, bars, meeting rooms and canteen kitchens in a very small space. When located in a tower or other mixed-use building, further noise factors come into the mix.

As a specialist designer, you are faced with the task of mastering the complex interplay of airborne, impact and structure-borne noise from a wide variety of sources.

As a long standing partner, we offer you reliable planning support, high performance products, and a wide range of solutions that free up your design options.

With the **REGUPOL sonus** or **REGUPOL comfort** product ranges, we offer you a comprehensive portfolio of under screed and underfloor impact sound solutions. Plus, **REGUPOL sonusclips** and **REGUFOAM hangers** enable you to retrofit drywall or existing constructions with airborne and impact sound insulation.



REGUPOL sonus



REGUPOL comfort



REGUPOL sonusclips and REGUFOAM hangers



Good to know:

We would be glad to provide you with detailed technical information about **REGUPOL**. Just call or email us: **REGUPOL Germany** +49 2751 803-0 acoustics@regupol.eu

HOW DO YOU
**TURN A ROOF INTO
SOMETHING SPECIAL?**
TOGETHER.

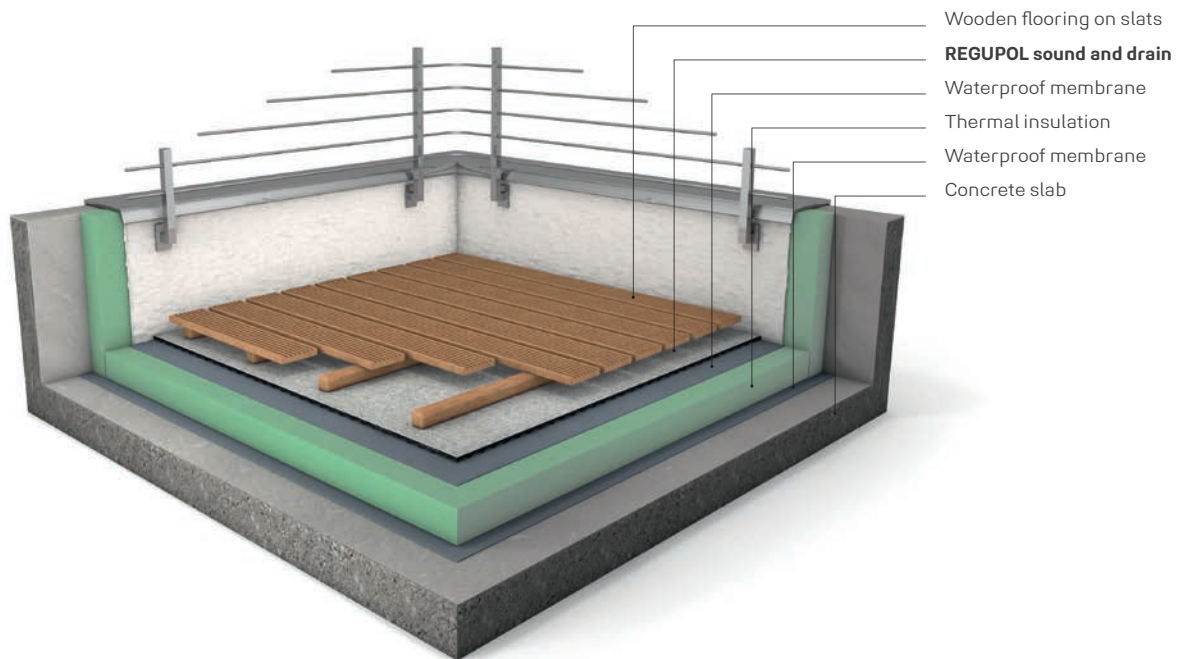




Roof terraces are becoming increasingly popular places to meet. Cleverly used and soundproofed, they make attractive destinations for tenants or locations for restaurants as well as other modern concepts.

A star-lit sky lounge or an extra-large barbeque in a fashionable restaurant – hotel roof gardens and terraces are in vogue all over the world. **REGUPOL sound and drain** impact sound insulation provides peace and quiet in the living spaces and bedrooms below. Thanks to European CE label certification, it is if fully compliant across the EU.

In addition to its acoustic properties, **REGUPOL sound and drain** also acts as a fully waterproof roof membrane complete with water drainage properties. Let us support you!



REGUPOL sound and drain



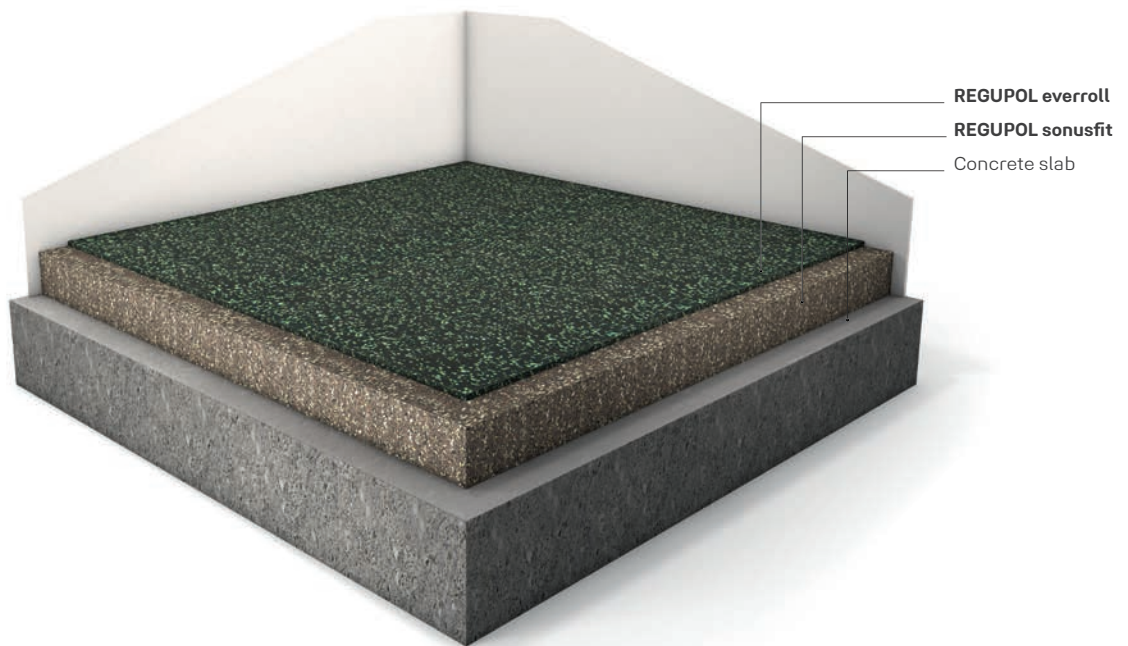
HOW DO YOU
**MUFFLE THE
CLANG OF BARBELLS?**
TOGETHER.



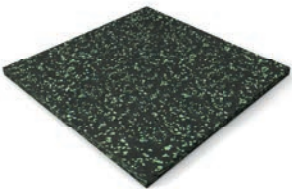
Fitness studios are more popular than ever. Gyms located in residential and commercial buildings translate into short distances and easy access, but they present complex acoustic challenges.

More equipment and courses means more noise sources. We tailor sound insulation designs to each fitness studio, based off of their type, scope, intensity, and building structure. Each design is implemented without impairing the functional properties of the sports surfaces.

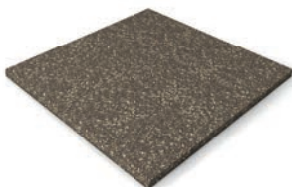
As an expert in acoustic protection and a leading supplier of sports and fitness surfaces, **REGUPOL** offers solutions meeting the requirements of both sectors. The **REGUPOL everroll** and **REGUPOL sonusfit** product ranges offer functional sports properties combined with highly effective sound insulation - ask the experts!



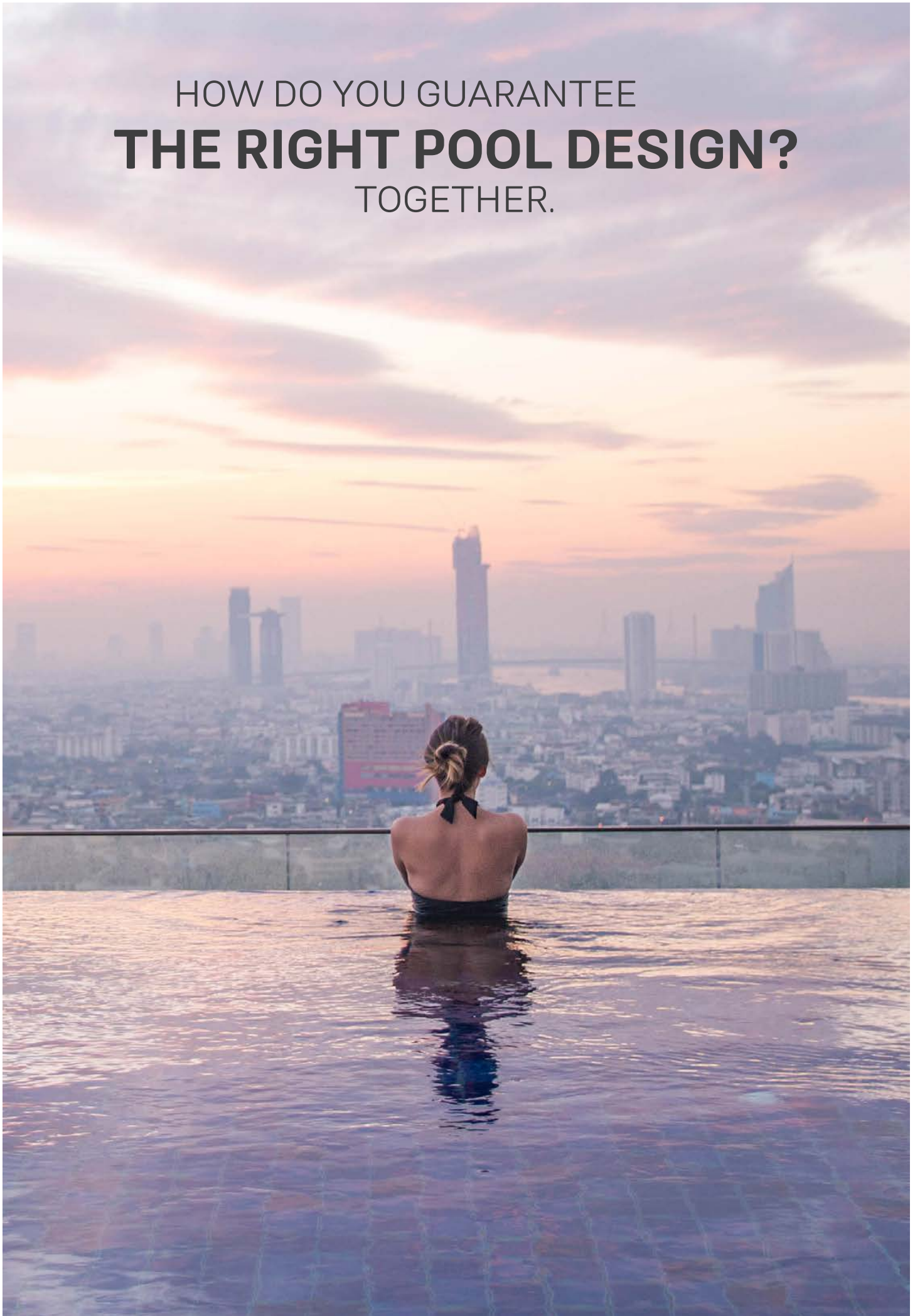
REGUPOL everroll



REGUPOL sonusfit



HOW DO YOU GUARANTEE
THE RIGHT POOL DESIGN?
TOGETHER.

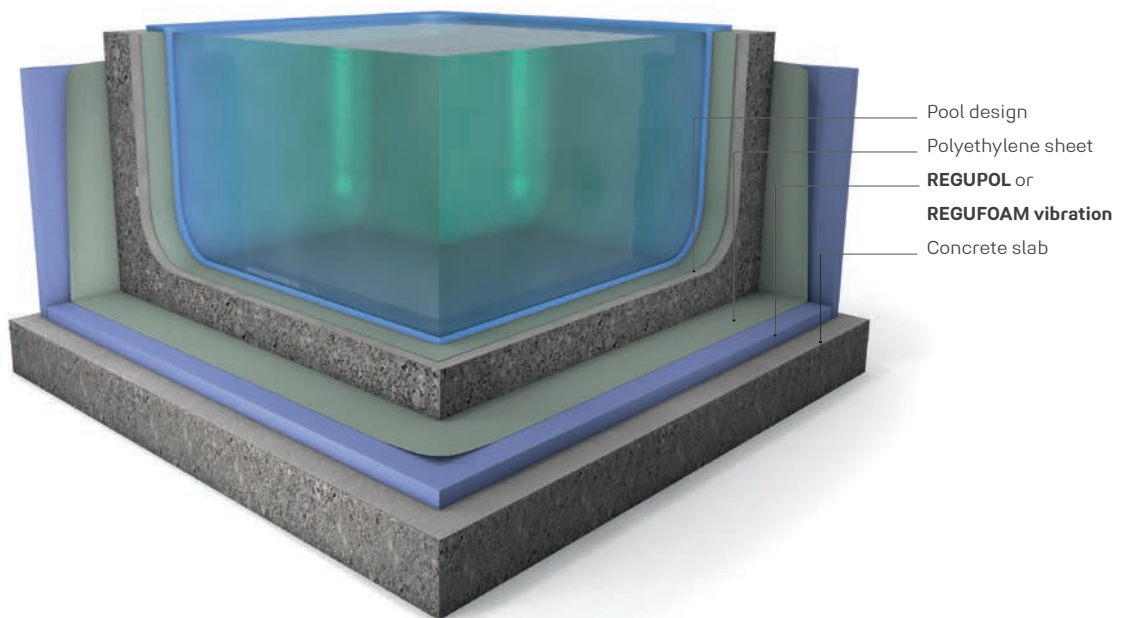




Pools make a great addition to various types of mixed-use buildings, but they need to be properly insulated.

Pool noise is generated by swimmers pushing off from the edge of the pool or jumping into the water. Busy pools can be very noisy. But even a few leisurely laps can compromise sophisticated mixed-use concepts. Retrospectively, it is difficult to supplement or improve existing soundproofing solutions.

Part of our comprehensive range, which also includes approved and externally monitored specialist solutions, **REGUPOL** and **REGUFOAM vibration** products meet all the prerequisites of precision tailored solutions and reliable design in this sensitive area of application. Ask the experts for detailed advice on selecting the right product and elastic mounts.



REGUFOAM vibration



REGUPOL vibration



Our tip:

More and more pools are being built on the rooftops of upmarket mixed-use buildings. In these applications, combining **REGUPOL sound and drain** provides an ideal solution.



HOW DO YOU ENSURE SOLUTIONS ARE SIMPLE AND SAFE? **TOGETHER.**

REGUPOL has been in business for some 65 years and enjoys a worldwide reputation. As a customer, you want your supplier to provide you with the right solution backed by professional expertise. Creative, committed and highly motivated, our staff are here to do just that. As a result, our customers trust us – something that is attested to by our long-standing customer relationships.

Independent studies show that our staff – their expertise, professionalism and commitment – are one of the key reasons why our customers choose **REGUPOL** products. We are confident that our team can deliver the best solutions both today and tomorrow.

REGUPOL leads when it comes to quality and service

With every thought, move and handshake, we strive to make sure that **REGUPOL** is globally synonymous with great products and a wide range of different industries. Not to mention excellent results, trust and high quality. In this regard, we see ourselves as a service and quality leader.

This aspiration is encapsulated in our brand proposition: "Good from the outset." We want customers to be sure they have chosen the right solution, regardless of which product they are working with. In fact, we strive to understand our customers and their needs in order to ensure that results are good from the outset and that our customers' expectations are exceeded. We can only perform well if we truly understand what our customers need and how we can help them achieve their goals. Only by doing this can our work make them feel they have made the right decision.

Our numerous references attest to our track record.

We have installed our products in the Burj Khalifa in Dubai, in the Elbphilharmonie in Hamburg and in the Olympic Stadium in Berlin



MADE IN GERMANY



Ask the experts about the best solution for your project.

REGUPOL +49 2751 803 0 | info@regupol.de |

www.regupol.com



1
Ressources



2
Production

3
Durability



4
Recycling



REGUPOL

HOW DO YOU BECOME MORE ENVIRONMENTALLY FRIENDLY? **TOGETHER.**

In the 1950s, polyurethane foam was new and very expensive. Instead of using all of the material produced, a considerable quantity was disposed. Our company was founded in 1954 to reprocess this wasted material into composite foam. Recycling is in our DNA.

How sustainable are REGUPOL products?

The circular economy works when recycled products compete directly with new products – we have been proving this for 65 years. **REGUPOL** products are typically made from 75% to 95% recycled materials, as are our sports mats. However **REGUFOAM** products are made from genuine raw materials.

What standards and legal requirements does REGUPOL meet?

Our company has been fully DIN EN 14001 certified since 1997 and will remain so. In addition, our products and mats comply with paragraph § 45 II No. 2 of the German draft bill on recycling management. We hope that the clearly formulated regulation will help make government action more sustainable.

What is sustainable about our human resources policy?

All our staff in Germany are paid according to a chemical industry-wide collective agreement. We are a recognised provider of insulation solutions and attach particular importance training, which is why a large number of trainees undergo their training in-house.



New Life: From the disposing to a recycling economy

REGUPOL is a founding member of the „Initiative NEW LIFE“ and commits to an optimal recycling economy, together with the other member corporations. Jointly, the members want to point out the advantages of recycling products from ELT (End-of-Life-Tires) and motivate to act sustainably. More about the initiative: www.initiative-new-life.de

REGUPOL's CO₂ balance sheet

In 2016, we partnered with the NRW Efficiency Agency to create a CO₂ location balance sheet, showing our total greenhouse gas emissions as CO₂ equivalents. We are on the right track. Find out more at www.regupol.com.



750

employees

11

locations worldwide

90.000

tons of high-quality plastic per year

132

countries with satisfied customers



HOW DO YOU GET TO THE TOP? **TOGETHER.**

If you want to set the highest standards in construction, you will find a great partner in REGUPOL. In addition to our 65 year commitment to leadership, REGUPOL is the building material of choice for experts worldwide.

As a fourth-generation family business, **REGUPOL** currently employs 750 people at eleven locations. Our customers come from over 132 countries around the globe. For them, we recycle more than 90 000 tons of high-quality plastics every year into products that set standards.

Our brand ambassador Usain Bolt – the fastest man in the world – embodies our focus on performance through skill and will. Usain Bolt:

"I love Regupol running tracks. They are fast, they feel the same everywhere on the track and they have no joints."

Our extensive range of training courses is just as targeted. Comprising business vocations, day release and mechanical and plant engineering, the focus is very much on young people. They represent our future. We are proud of their success.

We've got it covered.



REGUPOL Germany GmbH & Co. KG

Am Hilgenacker 24
57319 Bad Berleburg
phone +49 2751 803-0
info@regupol.de

REGUPOL America LLC

REGUPOL Australia Pty. Ltd.

REGUPOL Acoustics Middle East FZE

REGUPOL Schweiz AG

REGUPOL Zebra Athletics LLC

BSW Shanghai CO. LTD.

www.regupol.com